

Braided Ear-Saver for Mask (Konektor Masker)

Design by Amelia Putri

Save your behind the ears from the uncomfortable mask's elastic bands with this braided ear-saver. Now you can wear your mask longer and more comfortable. The ear-saver is knitted lengthwise so it can be easily adjusted for shorter or longer finished piece.

Difficulty: Beginner to intermediate. Not suitable for the first-ever knitting project.

Yarn: Ice Yarn Baby Comfort. 50% superfine nylon, 50% superfine acrylic. 190m per 100g. Worsted weight.

Needles: 1 pair of 4.5mm straight or circular knitting needles.

Additional Notion: 1 cable needle. 1 tapestry needle. 2 buttons. 1 sewing needle and sewing thread with similar color with the yarn (optional).

Sizes: 2 sizes. Shorter ear-saver for behind the ears user and longer ear-saver for hijab or over the ponytail user.

Special skill required: Basic cable knitting.

Glossary

3/3 LC - slip 3 stitch as if to purl to cable needle, put to the front of the work, knit 3 stitches from the left needle, knit 3 stitches from the cable needle.

3/3 RC - slip 3 stitches as if to purl to cable needle, put to the back of the work, knit 3 stitches from the left needle, knit 3 stitches from the cable needle.

RS – Right Side of the work.

WS – Wrong Side of the work.

INSTRUCTIONS

Cast on 3 stitches. Turn the work.

Increase

Set-Up Row 1, 3 and 5 (WS): Knit all stitches.

Set-Up Row 2 (RS): Knit 1 stitch, knit front and back onto the next stitch, knit the last stitch. [1 stitch increased].

Set-Up Row 4 (RS): Knit 1 stitch, knit front and back onto the next 2 stitches, knit the last stitch. [2 stitches increased].

Increase Row 1 (RS): Knit 1 stitch, knit front and back onto the next stitch, knit until 2 stitches left, knit front and back onto the next stitch, knit the last stitch. [2 stitches increased].

Row 2 (WS): Knit all stitches.

Repeat Increase Rows 1 - 2 until there are 10 stitches on the needles.

Body

Braid Set-Up Row 1 (RS): Knit 1 stitch, knit front and back onto the next stitch, knit until 2 stitches left, knit front and back onto the next stitch, knit the last stitch. [2 stitches increased].

Braid Set-Up Row 2 (WS): Knit 1 stitch, purl to last stitch, knit 1 stitch.

Braid

Row 1 (RS): Knit 1 stitch, 3/3 LC, knit 3 stitches from cable needle, knit 4 stitches.

All Even Rows (WS): Knit 1 stitch, purl to last stitch, knit 1 stitch.

Row 3 and 5 (RS): Knit all stitches.

Free Pattern

Row 7 (RS): Knit 4 stitches, 3/3 RC, knit 3 stitches from cable needle, knit 1 stitch.

Row 9 and 11 (RS): Knit all stitches.

Repeat **Rows 1–12** for 1 more time (for behind the ear user) or 6 more times (for hijab or over the ponytail user).

Next RS: Knit all stitches.

Next WS: Knit 1 stitch, purl to last stitch, knit 1 stitch.

Decrease

Row 1 (RS): Knit the first stitch, slip-slip-knit (*slip the first and second stitch on the left needle as if to knit, one at a time, insert the tip of left needle to the front legs of those 2 stitches, wrap the yarn to the right needle then pull through both legs*), knit until 3 stitches left, knit the next 2 stitches together as if they are 1 stitch, knit the last stitch. [2 stitches decreased].

Row 2 (WS): Knit all stitches.

Repeat **Rows 1 – 2** until there are 4 stitches on the needles.

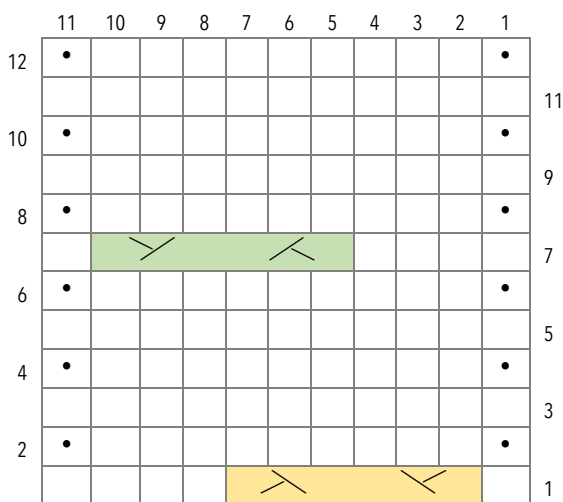
Next RS: Knit the first stitch, knit the next 2 stitches together as if they are 1 stitch, knit the last stitch. [1 stitch decreased].

Next WS: Knit 3 stitches together. [2 stitches decreased]. Cut the yarn about 10cm long and thread into the last stitch. Pull tight to secure the knot.

Finishing

Rinse the finished piece with room-temperature water then soak with a gentle soap or shampoo for 15-25 minutes. Rinse gently without pressing it too hard or twisting until clean. Press the finished piece gently. Lay it over a towel, then roll it inside the towel to remove the excess water. Lay flat onto a waterproof mat and block it without pulling it too hard using stainless steel pins until completely dry. Weave all the yarn ends using tapestry needles. Sew 2 buttons on each end of the edges (lengthwise), about 4cm from the cast on and bind off edges using the same yarn or using a sewing thread.

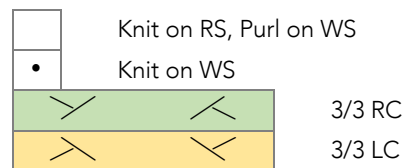
BRAID CABLE CHART



Read the Braid Cable Chart from **right to left** on the **Right Side**.

Read the Braid Cable Chart from **left to right** on the **Wrong Side**.

CHART KEY



Amelia Putri is an Indonesian knitter and yarn dyer. Please give credit by following her Instagram account at [@amelia_put](#) and [@papiput](#). You can also support her hand-dyed yarn line by ordering Papiput Yarn [here](#) (for Indonesian orders) or [here](#) (for international orders).

You may sell the finished objects from this design. It is highly appreciated if you notify the designer first.